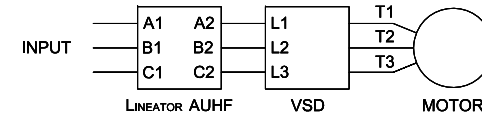


Rev. No.	Revision Note	Date	By	Checked
A5	Revised Capacitors	26-Apr-13	AH	YM
A6	Revised Brackets	07-May-14	AH	YM

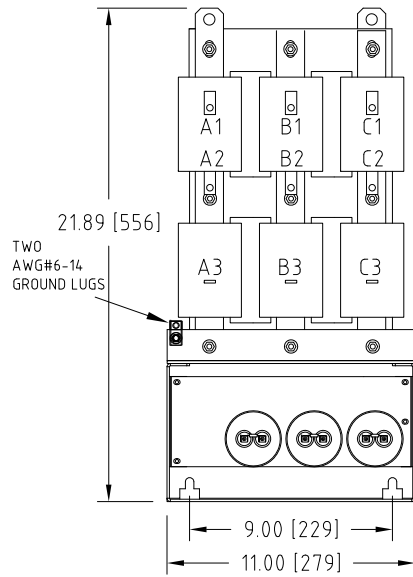
### Connection Diagram



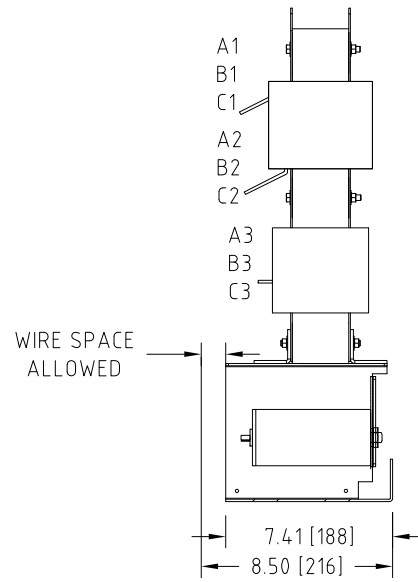
UNIT SPECIFICATIONS				INPUT	OUTPUT	APPROX. WT
HP [kW]	PHASE	VOLTS	Hz	AMPS	kW	lb [kg]
15 [11]	3	208	60	4.0	13	98[45]

#### NOTES:

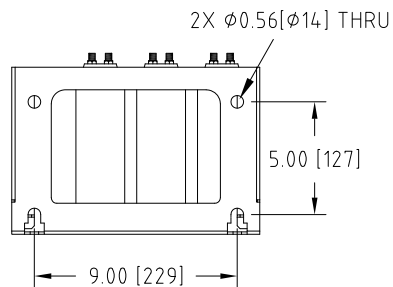
- CUSTOMER IS RESPONSIBLE FOR INSTALLATION TO MEET ALL NATIONAL AND LOCAL ELECTRICAL CODES AND OTHER APPLICABLE ELECTRICAL SAFETY AUTHORITIES.
- CUSTOMER IS RESPONSIBLE FOR PROPER COOLING OF FILTER COMPONENTS. ALLOWED AMBIENT: MAXIMUM 60°C, MINIMUM -40°C. A MINIMUM CLEARANCE OF 2" MUST BE ALLOWED ON BOTH RIGHT AND LEFT SIDES. PROPER VENTILATION MUST ENSURE THAT SUPPLY AIR FLOWS THROUGH THE REACTOR COILS FROM BELOW THE UNIT.



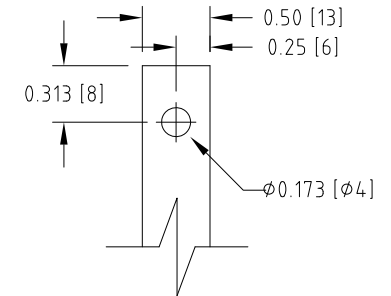
Front View



Side View



Bottom View



Input A1,B1,C1 & Output A2,B2,C2  
TERMINALS  
THICKNESS: 1/8"

MIRUS International Inc.						31 Sun Pac Boulevard, Brampton, ON, Canada L6S 5P6 Tel:(905) 494-1120 Fax: (905) 494-1140 Toll Free: 1-888-TO MIRUS	
Unless otherwise specified, dimensions are in inches and [mm].	Drawn By YM	Date Created 04-Mar-08	Checked by YM	Approved by - date YM-04-Mar-08	Scale NTS	Title 15 HP, 208 V, 60 Hz LINEATOR™ AUHF (Open Style)	
The information contained herein is the sole property of MIRUS International Inc. Any form of reproduction, distribution and/or disclosure of this information, all or in part, is strictly prohibited without the express written consent of MIRUS International Inc.			Filename AUHF-15-208-60-D-E0-A6	Revision A6	Sheet 1/1		