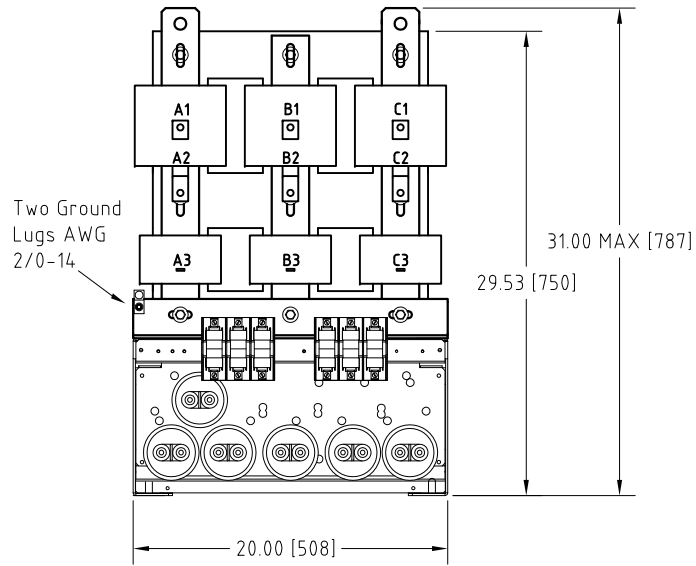
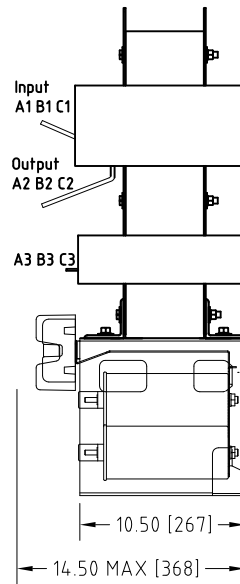


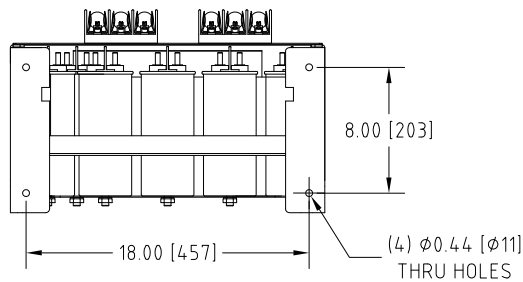
| Rev. No. | Revision Note                   | Date      | By | Checked |
|----------|---------------------------------|-----------|----|---------|
| A11      | REVISED TERMINALS               | 27 FEB 14 | AH | YM      |
| A12      | REVISED TO PRESSURE PLATE STYLE | 21-SEP-18 | CG | BDK     |



Front View



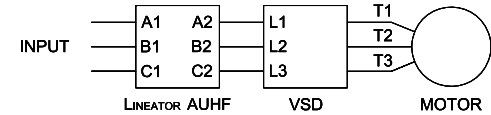
Side View



BOTTOM VIEW

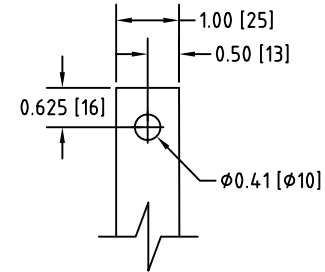
**NOTE:**  
This open style unit is not equipped with panel mount brackets. If panel mounting is desired, a suitable bracket must be provided by others.

**Connection Diagram**



| UNIT SPECIFICATIONS |       |       |    | INPUT | OUTPUT | APPROX. WT |
|---------------------|-------|-------|----|-------|--------|------------|
| HP [kW]             | PHASE | VOLTS | Hz | AMPS  | kW     | lb [kg]    |
| 250 [185]           | 3     | 600   | 60 | 225   | 209    | 510 [232]  |

NOTES:  
1. CUSTOMER IS RESPONSIBLE FOR INSTALLATION TO MEET ALL NATIONAL AND LOCAL ELECTRICAL CODES AND OTHER APPLICABLE ELECTRICAL SAFETY AUTHORITIES.  
2. CUSTOMER IS RESPONSIBLE FOR PROPER COOLING OF FILTER COMPONENTS. ALLOWED AMBIENT: MAXIMUM 60°C, MINIMUM -40°C. A MINIMUM CLEARANCE OF 2" MUST BE ALLOWED ON BOTH RIGHT AND LEFT SIDES. PROPER VENTILATION MUST ENSURE THAT SUPPLY AIR FLOWS THROUGH THE REACTOR COILS FROM BELOW THE UNIT.



Input A1,B1,C1 & Output A2,B2,C2  
TERMINALS  
THICKNESS 1/4"

|  |                |  |                  |                                    |              |
|--|----------------|--|------------------|------------------------------------|--------------|
| <b>MIRUS International Inc.</b>  |                | 31 Sun Pac Boulevard, Brampton, ON, Canada L6S 5P6<br>Tel:(905) 494-1120 Fax: (905) 494-1140 Toll Free: 1-888-TO MIRUS |                  |                                    |              |
| Unless otherwise specified, dimensions are in inches and [mm].   | Drawn By<br>EH | Date Created<br>22-Jun-06  | Checked by<br>YM | Approved by - date<br>YM-22-Jun-06 | Scale<br>NTS |
| The information contained herein is the sole property of MIRUS International Inc. Any form of reproduction, distribution and/or disclosure of this information, all or in part, is strictly prohibited without the express written consent of MIRUS International Inc. |                | Title<br>250 HP, 600 V, 60 Hz<br>LINEATOR™ AUHF (Open Style)   |                  |                                    |              |
|  |                | Filename<br>AUHF-250-600-60-D-E0-A12   | Revision<br>A12  | Sheet<br>1/1                       |              |