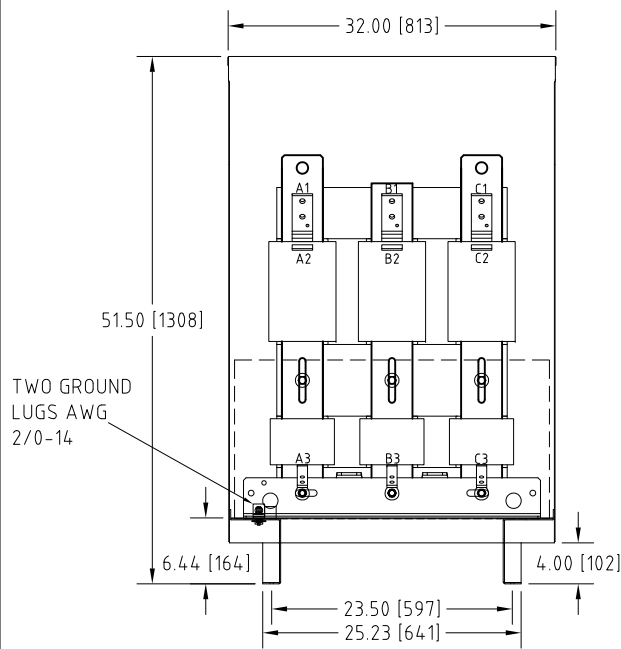
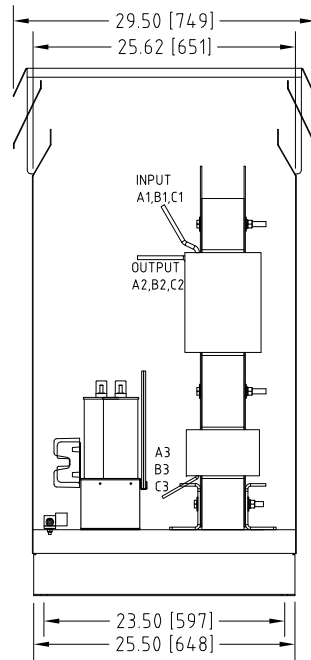


Rev. No.	Revision Note	Date	By	Checked
A1	REVISED CAPACITOR BOARD	17-NOV-2022	CG	BDK

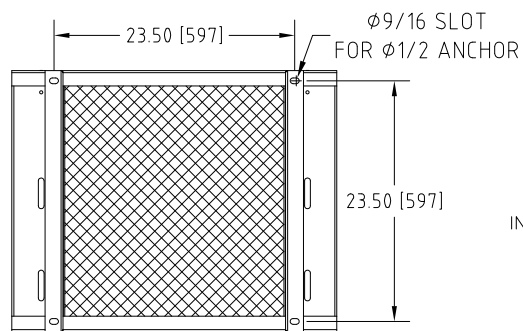


Front View

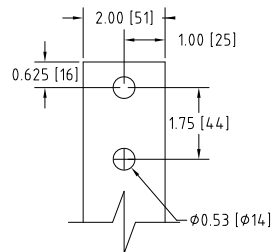


Side View

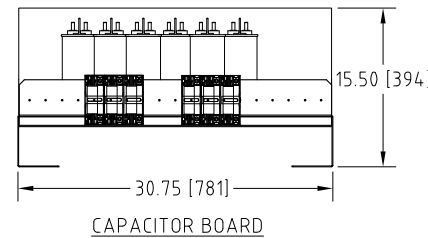
TWO GROUND LUGS AWG 2/0-14



Bottom View

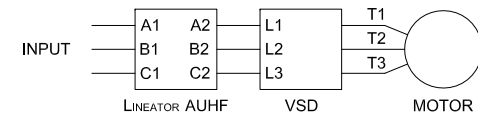


INPUT A1,B1,C1 & OUTPUT A2,B2,C2
TERMINALS
THICKNESS 3/8"



CAPACITOR BOARD

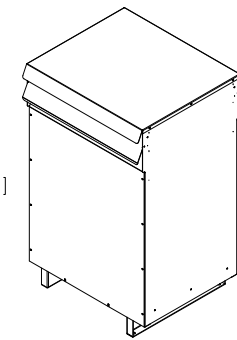
Connection Diagram



UNIT SPECIFICATIONS			INPUT	OUTPUT	APPROX. WT,
HP (kW)	PHASE	VOLTS	AMPS	kW	lb (kg)
450 (355)	3	480	530	394	1050 (477)

NOTES:

1. Customer is responsible for installation to meet all national and local electrical codes and other applicable electrical safety authorities.
2. Type 3R Enclosure requires only front access but minimum 6" clearance should be provided at rear for proper ventilation.



Isometric View

MIRUS International Inc.

31 Sun Pac Boulevard, Brampton, ON, Canada L6S 5P6
Tel:(905) 494-1120 Fax: (905) 494-1140 Toll Free: 1-888-TO MIRUS

Unless otherwise specified, dimensions are in inches and [mm].	Drawn by CG	Date 28-SEP-2021	Checked by BDK	Approved by - date BDK-28-SEP-2021	Scale NTS
The information contained herein is the sole property of MIRUS International Inc. Any form of reproduction, distribution and/or disclosure of this information, all or in part, is strictly prohibited without the express written consent of MIRUS International Inc.		Title 450 HP, 480V, 60Hz Enclosure Style Lineator AUHF			
		Filename AUHF-450-480-60-D-E1-A1	Revision A1	Sheet 1/1	